



Available in Australia through EdgeROV
www.edgerov.com.au
enquiries@edgerov.com.au



Drone Solutions

AUTONOMOUS DRONE-IN-A-BOX SOLUTIONS

Military-Grade Surveillance, Monitoring, & Inspections



EGCS

EASY GROUND CONTROL STATION

EGCS is designed by a Blue SUAS drone maker with NDAA compliance and functionality in mind. It is a tough, all-weather, handheld ground station that utilizes an industrial-grade tablet, powered by an Intel Pentium Silver© processor.

EGCS embodies a decade of operational experience, in both defense and commercial, extreme operational use cases.

Datalink is reliable and secure with AES256 encryption and FIPS 140-2 compatibility. It also features an adjustable 1W, 2x2 MIMO with Low-Density Parity Check (LDPC) wireless RF link.



Supported Products

SAMS/SAMS-T/ECTS

System Connectivity

Wi-Fi/BT/LTE/USB-A

USB-C & Third-party datalinks

EGCS Interfaces

USB3.0 Custom Ethernet Port

Custom Control Port

Supported Datalinks

Microhard/Silvus/Doodle

Software

CPU OS: Windows 11 / Linux

Controls: USB / GS Software

Electrical

Tablet AC Adapter: 12V / 36W (3A)

EGCS AC Adapter: 5V / 35W (2A)



KESTREL

SUAS (DRONES)

Kestrel is a tactical, military-grade, all-weather capable quadcopter with the ability to fly over 65 Mph and carry a wide range of modular optical and sensor payloads, up to 4.4lb in total.

Kestrel is equipped with an advanced AI-powered EO/IR camera in addition to three (3) hardpoints on the sides and rear of the sUAS for additional payloads through three (3) Picatinny rails.

Empty Weight

3.5 Kg (w/o payload)

Top Speed

105 Km/h (65 mph)

Endurance

All weather (Rain, Snow & Fog)

Flight Time

45 minutes w EO/IR

Distance

20 Km (12.04 miles)

Payload Capacity

2.0 Kg (4.4 lb.)

Three payload points in addition to EO/IR camera



KESTREL HEAVY

SUAS (DRONES)

Kestrel Heavy is a tactical, military-grade, all-weather capable quadcopter with the ability to fly over 65 Mph and carry a wide range of modular optical and sensor payloads, up to 3.5Kg (7.7 lb.) in total.

Kestrel is equipped with an advanced AI-powered EO/IR camera in addition to three (3) hardpoints on the sides and rear of the sUAS for additional payloads through three (3) Picatinny rails.



Empty Weight

5.5 Kg (w/o payload)

Top Speed

105 Km/h (65 mph)

Endurance

All weather (Rain, Snow & Fog)

Flight Time

55 minutes with EO/IR Camera
30 minutes with 3Kg payload

Maximum Payload Weight

Up to 3.5Kg (7.7 lb.)

Payload Capacity

Three hard point in addition to
EO/IR camera



OSPREY

SUAS (DRONES)

Osprey Hexacopter is a durable carbon composite drone with motor redundancy for increased reliability. Its slightly overlapping propellers create a relatively compact form factor.

The hex configuration makes the airframe ideal for carrying a variety of large payloads or cargo, up to 3.5Kg (7.7lb), over longer distances, in adverse weather conditions



Empty Weight

6.0 Kg (w/o payload)

Top Speed

90 Km/h (56 mph)

Endurance

All weather (Rain, Snow & Fog)

Flight Time

60 minutes w/o payload

Distance

25 Km (15.5 miles)

Payload Capacity

3.5 Kg (7.7 lb.); Three Hard points



OSPREY HEAVY

SUAS (DRONES)

The Osprey Heavy Hexacopter is a durable carbon composite drone with motor redundancy for increased reliability.

The hex configuration makes the airframe ideal for carrying a variety of large payloads or cargo, up to 7Kg (15.4 lb.), over longer distances, in adverse weather conditions.



Empty Weight

9.0 Kg (w/o payload)

Top Speed

80 Km/h (50 mph)

Endurance

All weather (Rain, Snow & Fog)

Flight Time

60 minutes with 2.0 kg payload

45 minutes with 5.0 kg payload

Maximum Payload Weight

7.0 Kg (15.4 lb.)



ALBATROSS

SUAS (DRONES)

Albatross TsUAS is the most versatile and secure system in its class. Featuring unlimited flight time, an unbreachable data connection, and a large 7.7lb payload capacity, Albatross is ideal for extremely long overwatch or surveillance flights carrying multiple payloads in harsh weather conditions. Equipped with three hardpoints, the airframe supports a wide range of payloads.



Empty Weight

3.5 Kg (w/o payload)

Tether Length

60m or 100m

Endurance

All weather (Rain, Snow & Fog)

Wind Gust Limit

25Kts

Battery Free-Flight

3-5 minutes for emergency only

Payload Capacity

3.5 Kg (7.7 lb.)
Three payload points



ALBATROSS HEAVY

SUAS (DRONES)

The Albatross Heavy Hexacopter is a durable platform, ideal for multi-payload persistent surveillance missions onboard ground vehicles, sea vessels, and fixed sites.



Empty Weight
4.0 Kg (w/o payload)

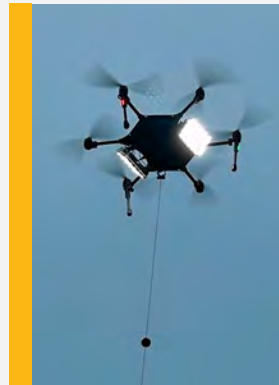
Tether Length
60m or 100m

Endurance
All weather (Rain, Snow & Fog)

Wind Gust Limit
25Kts

Battery Free-Flight
3-5 minutes for emergency only

Payload Capacity
6.0 Kg (13.2 lb.)
Three payload points



RAPTOR



www.edgerov.com.au | enquiries@edgerov.com.au

SUAS (DRONES)

Raptor is the first-of-its-kind hybrid solution with a versatile payload capacity that combines the unlimited flight capability of a tether sUAS with the advanced ability of up to 40 minutes of untethered free-flight. Simply untether and go

Raptor predominantly operates in the tethered mode for prolonged situational awareness missions. Following a command from an operator, a triggered alarm, or if the onboard sensors identify a pre-selected object, the tether is released for a free-flight autonomous or directed ISR mission before returning for precision automatic landing



Empty Weight

4.5 Kg (w/o payload)

Top Speed

90 Km/h (56 mph)

Endurance

All weather (Rain, Snow & Fog)

Flight Time

Unlimited (tethered); 40 minutes (free flight)

Distance

20 Km (12.04 miles)

Payload Capacity

2.0 Kg
One payload Point



EAGLE

SUAS (DRONES)

The Eagle Drone is Easy Aerial's heavy lifting sUAS (drone) and each Eagle Drone is specially designed and fully customizable according to the exact operational requirements and needs of the client.



Empty Weight

15 Kg (w/o payload)

Top Speed

80 Km/h (50 mph)

Endurance

All weather (Rain, Snow & Fog)

Flight Time

55 minutes

Distance

20 Km (12.04 miles)

Payload Capacity

15Kg (33lb)



TERN

SUAS (DRONES)

Automatic take-off, linear inspections including automatic detection of obstacles, cars, humans, and changes from the normal state, to landing and recharging - all without human intervention

Ability to take-off and land in different ground stations

Under Development to be released Q1/23



Empty Weight

6.0 Kg (w/o payload)

Top Speed

120 Km/h (74.6 mph)

Endurance

All weather (Rain, Snow & Fog)

Flight Time

60 minutes

Distance

80 Km (50 miles)

Payload

Next Vision Nighthawk 2-V EO/IR





Supported Use Cases

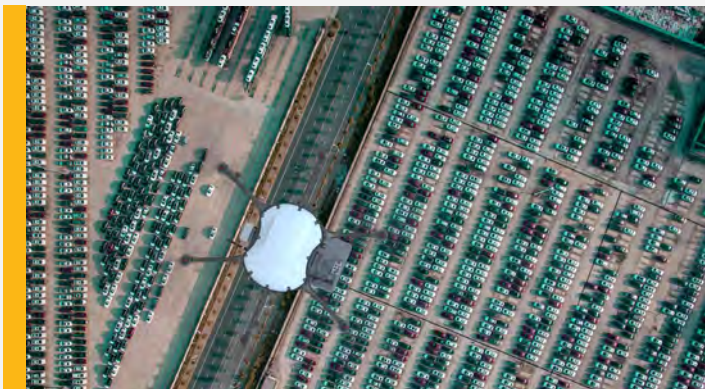
Additional Information About Easy Aerial's Osprey Configurations

OSPREY RFID

OSP-RFD

The Osprey RFID (OSP-RFD) variant is equipped with an RFID antenna, a specialized computer and an optional EO/IR camera. The RFID antenna is designed to read passive RFID tags in order to create a detailed accurate inventory manifest for every flight. The optional EO/IR camera – either Next Vision Nighthawk2-V or Next Vision Dragoneye 2 – is used to take snapshots and could be slaved to the RFID reading.

In addition, the EO/IR camera comes with built-in advanced Ai analytics such as auto classification, tracking day and night and detection of fire and smoke, so the same configuration can be used for inventory management during the day and for perimeter security during the night.

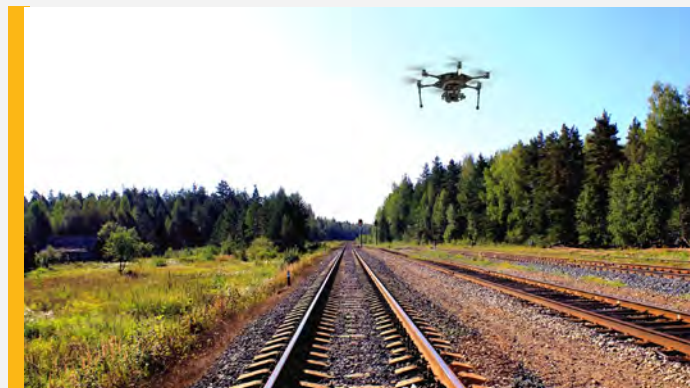


OSPREY INSPECTION

OSP-INS

Osprey Inspection is a version of the Osprey which includes an Ouster lidar mounted alongside a Teledyne 50MB pixel camera on a highly specialized stabilized gimbal which also includes its own IMU.

The version of the Osprey was designed to perform drone-in-a-box track inspections.



OSPREY INVENTORY

OSP-INV

Osprey Inventory (OSP-INV) is one of the newest Osprey Drone-in-a-box configurations designed to perform routine (scheduled) and on-demand inventory manifest of large compounds. Using a high-resolution 50Mb pixel Teledyne camera, the system will identify pre-trained objects, will report these objects, and immediately after landing, will generate a PDF report with all the items identified during the flight, including sample pictures as evidence



OSPREY MAPPING

OSP-MAP

Osprey Mapping is a version of the Osprey that supports automatic extremely high-resolution mapping drone-in-a-box. Using the on-board 50MB Teledyne camera, the system will self-launch at a specified time; will fly a complete mapping mission; will perform precision landing in the ground station; offload the pictures to a computer installed in the ground station; will use a locally installed Pix4D to create 2D maps; Everything is without any human operation and internet connectivity.

This configuration can optionally receive a Next Vision Dragon eye two camera for live streaming of EO/IR video, including advanced onboard analytics such as classification and auto-tracking of humans and cars day and night.



OSPREY SECURITY

OSP-SEC-DE // OSP-SEC-NH

Osprey Security is the most augmented version of the Osprey designed for all-weather 24/7 perimeter and border protection. This Osprey variant includes a Next Vision Nighthawk 2-V or a Next Vision Dragon eye 2 camera connected to an AI computer called Trip 5 which supports automatic classification of targets, automatic tracking day and night, automatic detection, and alerts of fire and/or smoke, and many other capabilities.



OSPREY & ALBATROSS ECHODYNE

OSP-ECO; OSP-H-ECO; ALB-ECO; ALB-H-ECO

Easy Aerial is honored to collaborate with Echodyne – A leading provider of lightweight tactical radars – to provide intelligent, reliable, and cost-effective anti-drone and radar-based perimeter security. Easy Aerial Osprey and Albatross sUAS can be equipped with one or two Echodyne radars and the Osprey Heavy and Albatross heavy can carry up to 3 radars for a 360 degrees aerial coverage. The onboard EO/IR camera can automatically slave to the radar for target identification and confirmation.

The Albatross and Albatross-H will act as a radar sentinel for over 24 hours and the Osprey Heavy will carry two Echodyne radars for over one hour of flight.

Camera options: Next Vision Dragon Eye; Next Vision Nighthawk 2-V; Next Vision Raptor



OSPREY SPECIAL

OSP-SPE

Osprey Special is a general name for customized versions of the Osprey to fit versatile payloads such as EW, jammers, radars, etc. The unique design and vast previous experience will ensure optimized aerodynamics operation and full protection coverage for any customer payload.

